








The Breakwater House



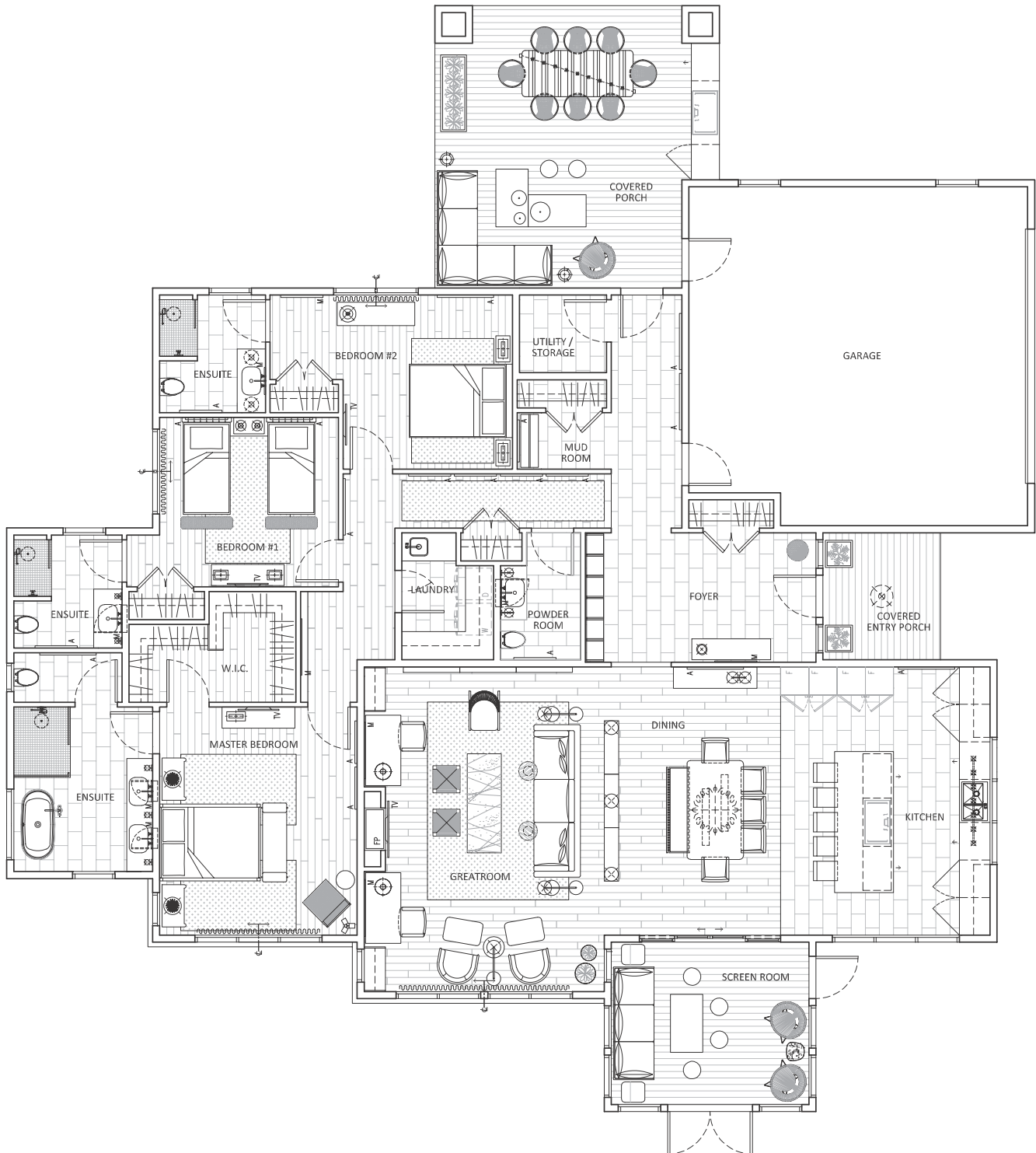
 3,174 SQ. FT.	 1 LEVEL	 3 BEDROOMS	 4 BATHS	 1 COVERED PORCH	 2-CAR GARAGE	 117 SQ. FT. SCREEN ROOM
---	---	--	---	---	--	--

This exquisite 3-bedroom, 4-bathroom luxury home redefines one-level living. Bright, airy, and open concept, there is over 3,000 square feet of space for entertaining, unwinding, and enjoying incredible views of the Northumberland Strait. The home includes a 2-car garage and a covered entryway, leading to a grand foyer inside with library shelving. A 117 sq. ft. dedicated screenroom is the perfect spot to spend a cozy evening. Each of the large bedrooms features an

ensuite and walk-in closet. The eat-in kitchen is equipped with an elite appliance package and high-end finishes. Buyers have the option to select an interior design scheme to suit their specific taste and style, including all interior layout finishes, furniture (optional), and lighting.

Harb'r Stone Village


The Breakwater House



FOR MORE DETAILS ABOUT HARB'R STONE VILLAGE CONTACT
ERIC LUM AT 902-412-4812 OR ELUM@FOXHARBR.COM
FOXHARBR.COM/HARBR-STONE-VILLAGE

