







# The Seabreeze House



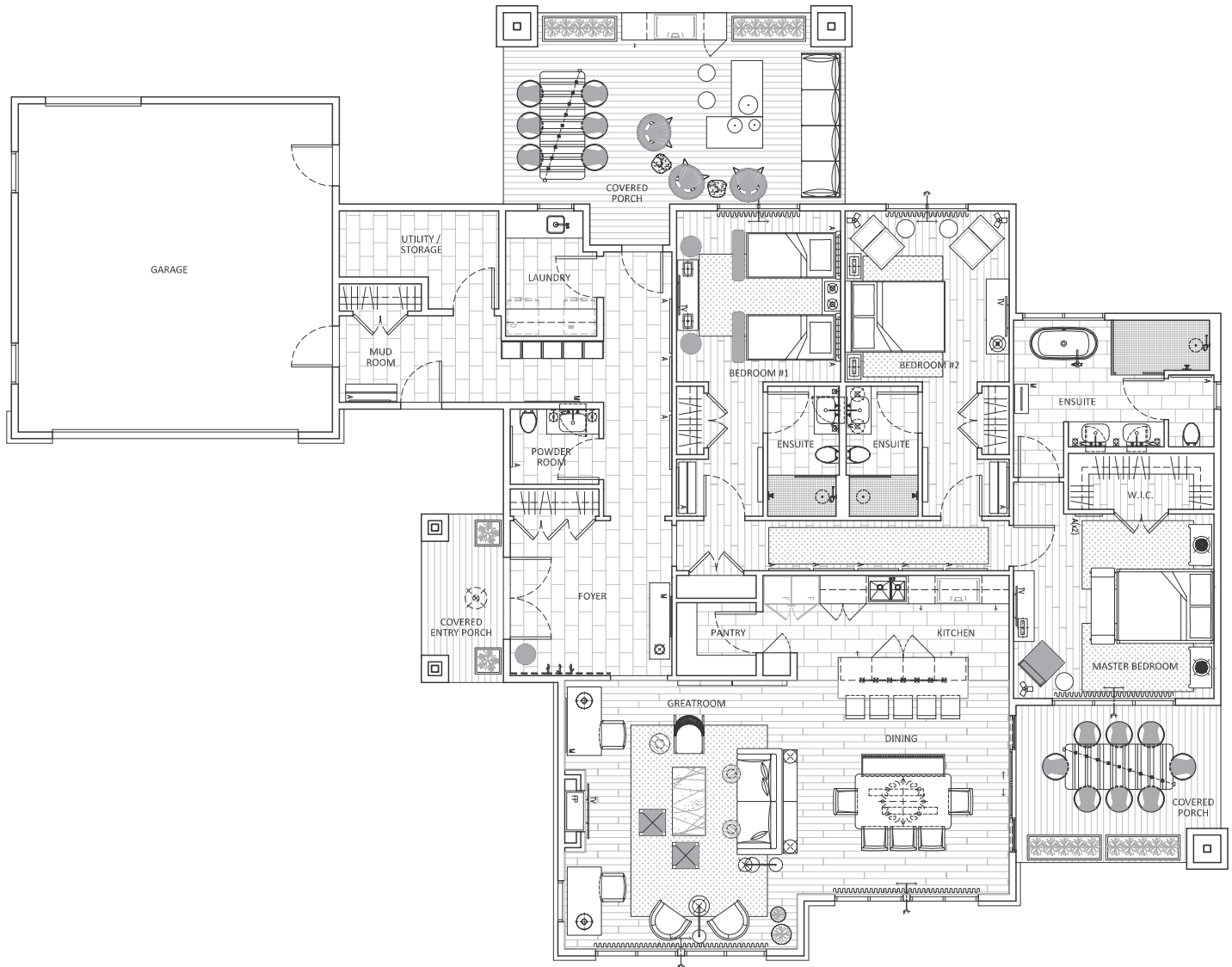
|   |   |  |   |  |  |
|---|---|--|---|--|--|
| <br>3,041<br>SQ. FT. | <br>1<br>LEVEL | <br>3<br>BEDROOMS | <br>4<br>BATHS | <br>2<br>COVERED<br>PORCHES | <br>2-CAR<br>GARAGE |
|---|---|--|---|--|--|

This exquisite 3-bedroom, 4-bathroom luxury home redefines one-level living. Bright, airy, and open concept, there is over 3,000 square feet of space for entertaining and unwinding, with breathtaking views of the Northumberland Strait. The home includes a 2-car garage and a covered entryway, leading to a grand foyer inside with library shelving. Each of the large bedrooms features an ensuite and walk-in closet. The eat-in kitchen is equipped with an

elite appliance package and high-end finishes. Buyers have the option to select an interior design scheme to suit their specific taste and style, including all interior layout finishes, furniture (optional), and lighting.

*Harb'r Stone Village*  


# The Seabreeze House



FOR MORE DETAILS ABOUT HARB'R STONE VILLAGE CONTACT  
**ERIC LUM** AT 902-412-4812 OR [ELUM@FOXHARBR.COM](mailto:ELUM@FOXHARBR.COM)  
[FOXHARBR.COM/HARBR-STONE-VILLAGE](http://FOXHARBR.COM/HARBR-STONE-VILLAGE)

